



New Vision • New World • New Resources

DEVELOPING HIGH GRADE COPPER-GOLD-ZINC AND SILVER SEAFLOOR MASSIVE SULPHIDE DEPOSITS

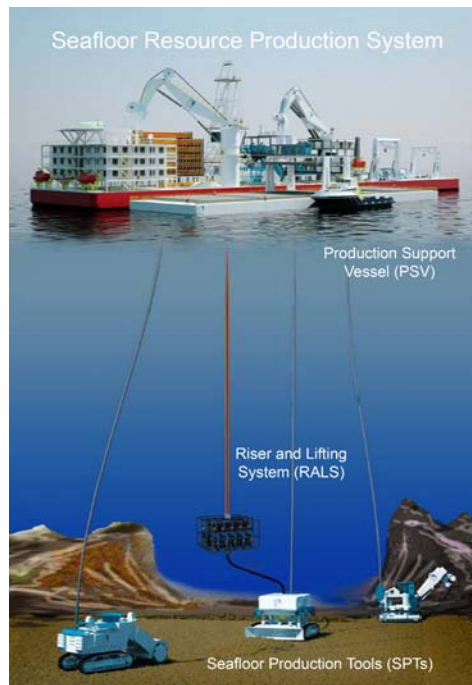
Solwara 1 Project

Nautilus is proposing to develop the Solwara 1 Seafloor Massive Sulphide ("SMS") system in the territorial waters of Papua New Guinea ("PNG").

The Project is the first full-scale deepwater mineral extraction project in the world. Solwara 1, a high grade copper-gold resource, lies in 1,600 meters of water.

Nautilus will use existing offshore oil technologies to cut ore from the seafloor and pump it to the surface as seawater slurry. Once the ore is dewatered, it will be shipped to shore for processing.

Processing is conventional froth flotation and smelting/refining, all of which will be contracted from existing facilities.



SOLWARA 1 PROJECT STATUS

Solwara 1 Engineering

An independent engineering study was released June 23, 2010. The study provides project definition and cost estimates to extract resources from the seafloor, raise it to the production support vessel, dewater it and deliver it to the Port of Rabaul, PNG. The study concludes:

- US\$383 million in capital cost with 17.5% contingency
- US\$70 per tonne operating cost with 10% contingency

Contracts are in place for the design and procurement of the SMTs and RALS equipment.

Solwara 1 Permitting

After two years of effort, Nautilus submitted an Environmental Impact Statement ("EIS") and Mining Lease Application to PNG authorities in the fall of 2008. Public consultation and independent review of the EIS are complete. The Environmental Permit was granted in December 2009. The Mine Warden's Hearing was also completed with no recorded objections. We expect to have the Mining Lease in place within 2010.

OVERVIEW

Nautilus Minerals Inc ("Nautilus") is the first company to commercially explore the seafloor for high grade massive sulphide deposits - a major source of the world's copper, gold, zinc and silver.

DEBT FREE & US\$185 MILLION
CASH AS OF JUNE 30, 2010

Capital Structure**

Shares outstanding	155,558,884
Options	12,903,500
Fully diluted	168,462,384*

**As of June 30, 2010

*Additional potential cash from full dilution US\$37.0 million

Major Shareholders

Gazmetall	21.0%
Anglo American	11.1%
Teck Resources	6.8 %

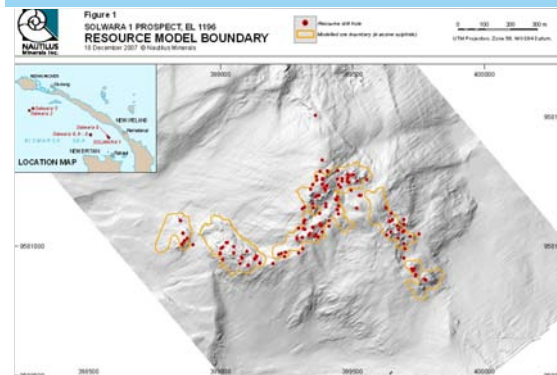
SEAFLOOR MASSIVE SULPHIDE DEPOSITS

SMS deposits form directly on the ocean floor where superheated water carrying metals from deep in the earth, mixes with cold seawater at the bottom of the ocean, depositing metal-rich minerals.



Growing Pipeline of High Grade Prospects in Tonga

Nautilus started exploring in Tonga in 2007 and is in the early stages of exploration. To date, the program has yielded 16 sampled SMS systems and many targets for follow-up on future cruises. Targets are potential systems that have not yet been positively identified and sampled. The rate of success demonstrates the enormous potential for SMS resources in Tonga. We will continue to explore Tonga with the objective to build a resource base to support future project development.

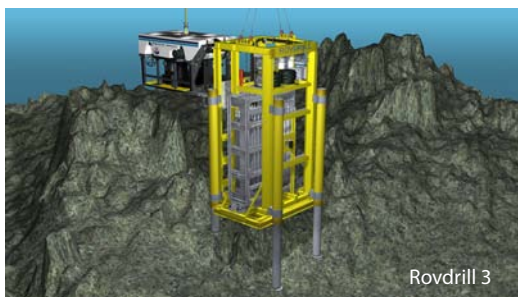


PNG EXPLORATION PROJECT

Building an Inventory of High Grade Copper-Gold-Zinc and Silver Systems

Nautilus has been exploring in Papua New Guinea for four years. In addition to the Solwara 1 Resource (see side bar) the work has yielded a growing inventory of high-grade Cu-Zn-Au-Ag systems in the Bismarck Sea.

Drilling Program 2010



Nautilus will commence its drilling program in the territorial waters of Papua New Guinea starting in October 2010. Leading offshore service provider, TSMarine will provide the drilling services. The drilling program will focus on improving the resource and geotechnical understanding at Solwara 1 as well as scout drilling at other prospects on the Company's 100% owned tenements in the Bismarck Sea.

PNG Mineralised Samples

Prospect	Cu %*	Zn %*	Au g/t*	Ag g/t*	Grab Sample Count (mineralised)
Solwara 2	1.1	24.2	10.8	345	67
Solwara 3	0.5	11.0	30.6	3375	2
Solwara 4 (+8)	11.1	23.0	14.9	259	54
Solwara 5	6.0	8.3	14.6	282	12
Solwara 6	11.7	18.4	16.1	203	7
Solwara 7	5.1	21.5	15.0	359	8
Solwara 9	6.3	10.6	19.9	296	17
Solwara 10	7.7	15.2	2.5	165	12
Solwara 11	1.6	16.9	1.2	180	26
Solwara 12	7.0	22.6	13.7	425	10
Solwara 13	9.1	30.7	4.7	546	7
Solwara 14	1.4	19.2	3.3	97	14
Solwara 16	2.1	18.6	2.8	105	6
Solwara 18	0.3	19.6	0.2	110	2

* Note - mean values of samples. Solwara 15 not sampled. Solwara 17 and 19 are sulphate systems and only weakly mineralised at surface. All three systems require additional evaluation to assess their true potential. Figures current as of March 2010.

Our successful 2009 program on the *MV Solstice*, contracted from Fugro International, discovered Solwaras 12, 13, 14, 16 & 18.

Proven High Grade Copper-Gold Resource

Golder Associates completed the world's first SMS NI43-101 compliant resource estimate for Solwara 1 based on 116 drill holes.

- Indicated Mineral Resource: 870kt @ 6.8% Cu, 4.8g/t Au, 23g/t Ag, 0.4% Zn
- Inferred Mineral Resource: 1,300kt @ 7.5% Cu, 7.2g/t Au, 37g/t Ag, 0.8% Zn

The resource is open to the west and at a depth where 38% of holes finished in mineralisation. The area drilled in 2007 was constrained by the vessel contract term and the depth limitations of the new Remote Operated Vehicle drill rigs. Currently Nautilus is working to extend the depth capacity for a 2010 drilling program.

SOLWARA 1 PROJECT



The Solwara 1 Project is currently in the engineering and permitting stage. Engineering is advanced with world-class offshore contractors and suppliers.



CAUTIONARY STATEMENT: This Company profile is intended only for information purposes. Statements made in this profile may contain information about the Company's future business prospects, such statements may be considered "forward looking". These statements – while expressed in good faith and believed to have a reasonable basis – are subject to risk and uncertainties that could cause actual results to differ materially from those set forth or implied by such forward looking statements. Investors should consult a professional advisor before making any investment decision.



CONTACT INFORMATION

CORPORATE OFFICE:

Toronto, Canada
Phone: +1 416 551 1100
Email: investor@nautilusminerals.com

PROJECT OFFICE:

Brisbane, Australia
Phone: +61 7 3318 5555